

Developing Food Oases in the Urban Food Deserts with Smart Urban Grower Network

Jejung Lee¹, Sejun Song¹, Sookhee Oh¹, Carlos Sun², Kiruba Krishnaswamy², Yaw Adu-Gyamfi²

1. University of Missouri – Kansas City, MO

2. University of Missouri – Columbia, MO

PG, FY 2019



Project Summary: This Smart and Connected Communities planning grant aims to build a collaborative ecosystem among urban growers/producers and create bridges from these farmers to underserved low-income neighborhoods in Kansas City. This planning project will focus on identifying the needs and challenges of stakeholders from both urban growers and food desert communities who have limited access to healthy and affordable food. In addition to the involvement of these key stakeholder groups, the project involves multiple disciplines from the geosciences, computer sciences, social sciences, and the transportation and food engineering sciences. A significant planning effort will be made for community engagement through neighborhood seminars, field training, focus group meetings, and survey development through partnerships with the University of Missouri Extension, Cultivate KC, and Antioch Urban Growers.

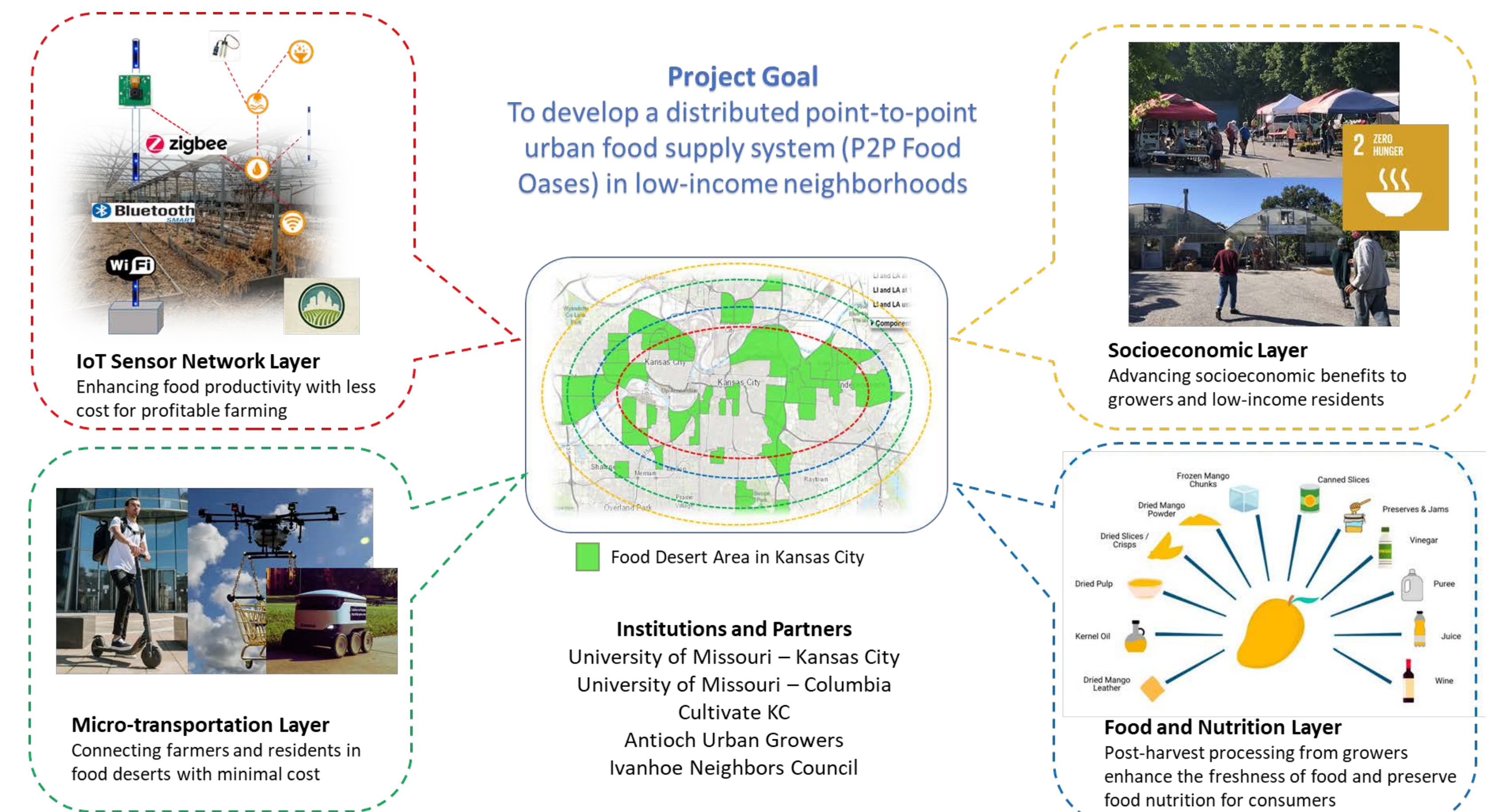
Project Questions



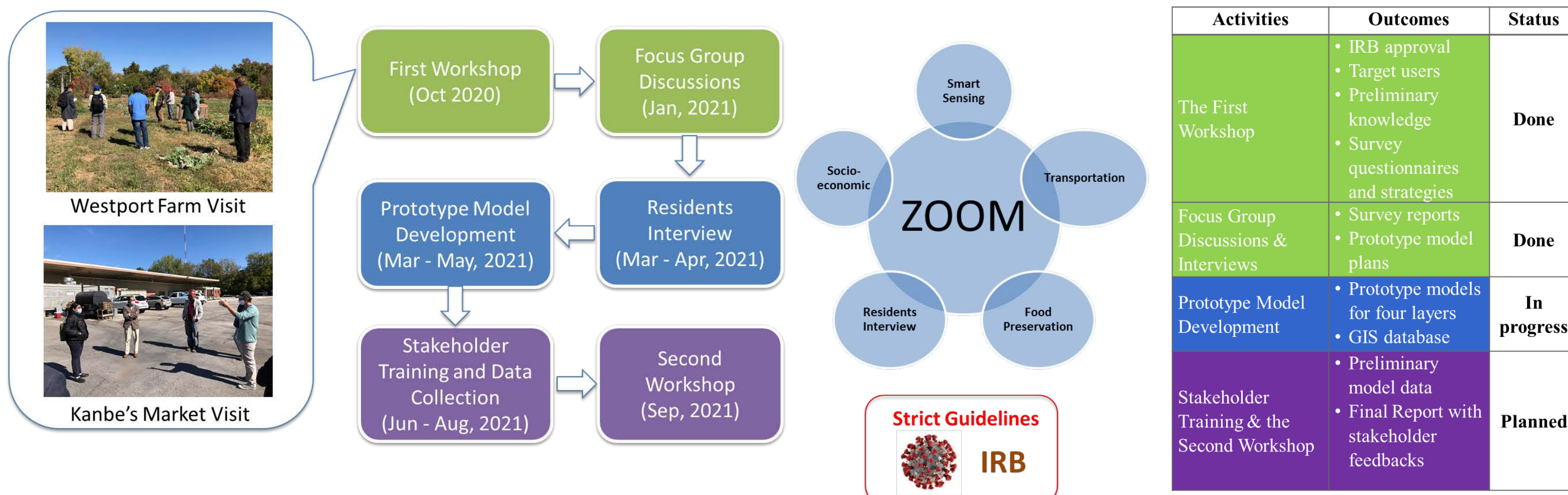
- C, A, I** Can IoT-based sensors enhance food productivity with less cost and make farming more profitable?
- C, A, I** Can emerging micro-transportation solutions connect farmers and residents in food deserts conveniently and with minimal cost?
- C, A, I, M** Can post-harvest processing from farmers enhance the freshness of food and preserve food nutrition for consumers?

- Partners**
- C** Cultivate KC
 - A** Antioch Urban Growers
 - I** Ivanhoe Neighbors Council
 - M** Missouri Extension

Intellectual Merit



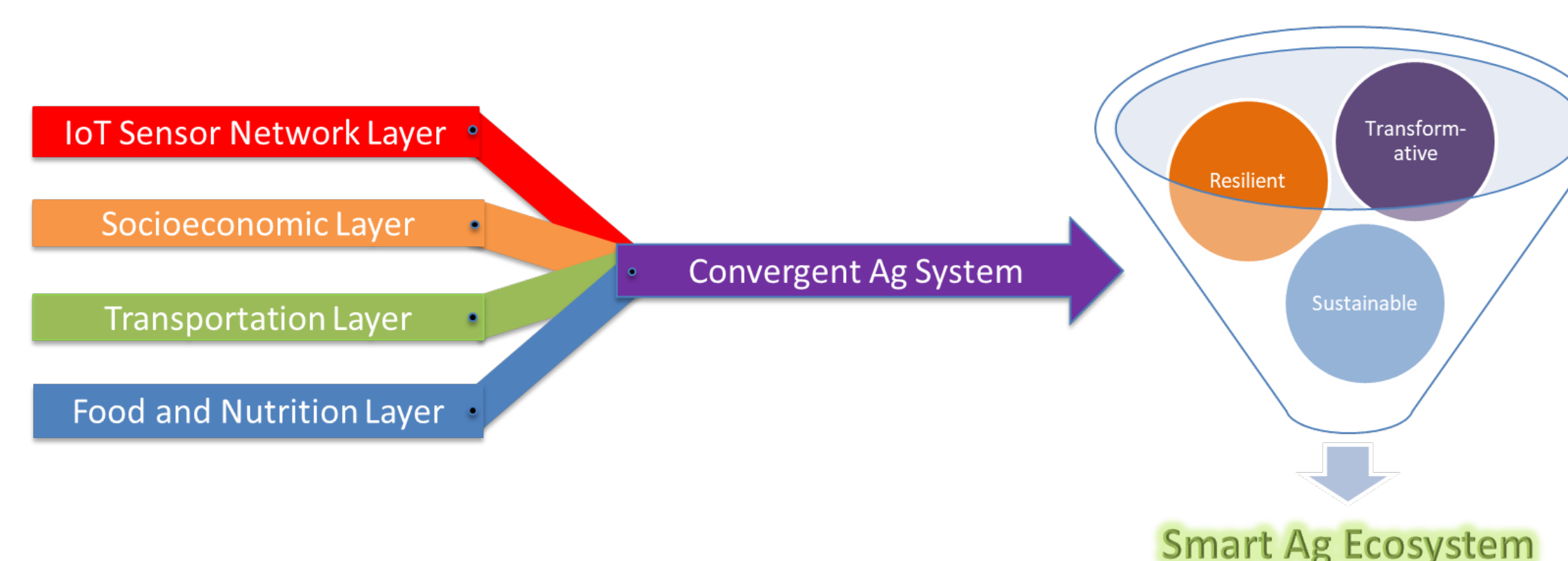
Project Activities (up to date)



Broader Impact (Short Term)

- Smart Urban Ag Network**
 - Broadening the network of urban farmers, non-profit organizations, and neighborhood communities
 - Connection of Academia and Ag Network
- Adaptation of Smart Technologies**
 - IoT farm sensors
 - Micro-transportation
 - Food and socioeconomic database
- Professional Training and Education**
 - A technical and entrepreneurship training for urban farmers
 - Undergraduate research

Broader Impact (Long Term)



Planned Activities

